

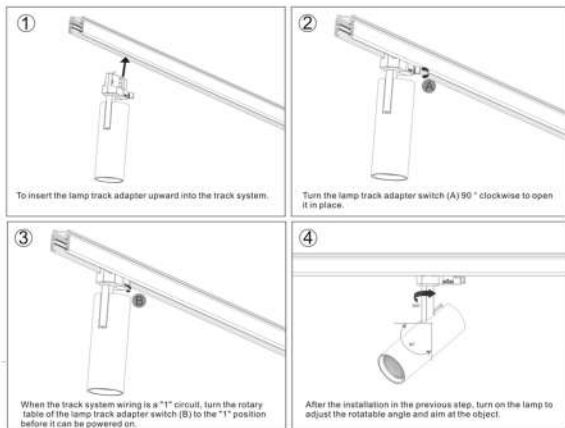
**LED TRACK LIGHT**  
**JM-4070 - Specification Sheet**

Material	Aluminium
Dimensions (mm)	L99*Ø90*H256mm
Input voltage	220-240V
Wattage	30W
Function	ON/OFF 2
Color temperature	3000K - 4000K
LED	COB
CRI	>90
Power factor	>0.95
Driver	TUV approved/CE approved
Lifetime	30.000 h
IP Grade	IP 20
Beam angle	36°
Surface color	Sandy white / Sandy black



■ Sandy white / Sandy black

**Instructions**

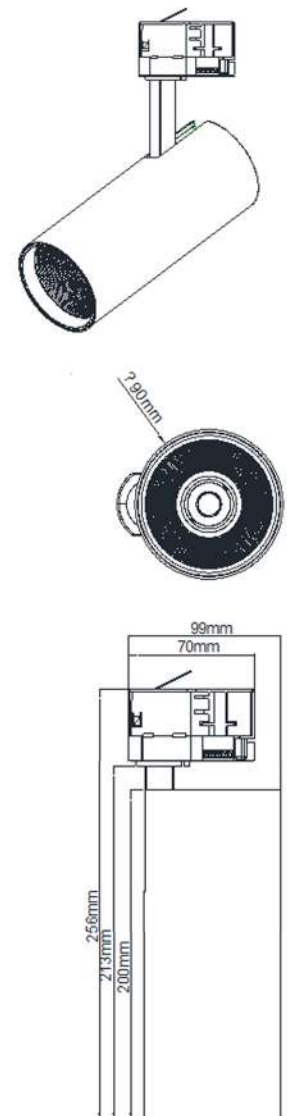


**Protometric data**

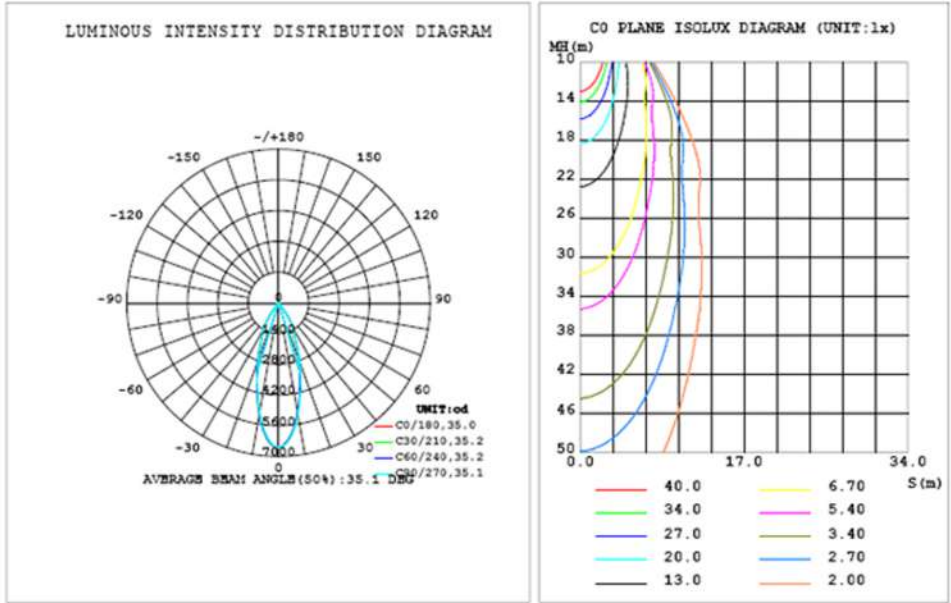
Test: U:221.20V I:0.1300A P:27.600W PF:0.9610 Freq:50.00Hz Lamp Flux:3285.91x1 lm		
NAME: ET-G021030WN-36-4 30W 36D	TYPE:	WEIGHT:
SPEC.:	DIM.:	SERIAL No.:
MFR.:	SUR.:	Shielding Angle:

DATA OF LAMP		PHOTOMETRIC DATA Eff: 119.05 lm/W			
MODEL		Imax (cd)	6671	S/MH (C0/180)	0.57
NOMINAL POWER (W)	30	LCR (%)	100.0	S/MH (C90/270)	0.55
RATED VOLTAGE (V)	220	TOTAL FLUX (lm)	3285.9	η UP, DN (C0-180)	0.0, 51.9
NOMINAL FLUX (lm)	3285.91	CIE CLASS	DIRECT	η UP, DN (C180-360)	0.0, 48.1
LAMPS INSIDE	1	η up (%)	0.0	CIBSE SHR NCM	0.50
TEST VOLTAGE (V)	221.1	η down (%)	100.0	CIBSE SHR MAX	0.60

**Size drawing**



Protometric data



C Range: 0 - 360DEG  
 C Interval: 15.0DEG  
 Test Speed: HIGH  
 Temperature: 25.3DEG  
 Operators: YU

Y Range: 0 - 100DEG  
 Y Interval: 1.0DEG  
 Test System: EVERFINE GO-2000B\_V1 SYSTEM V2.0.402  
 Humidity: 65.0%  
 Test Distance: 8.000m [K=1.0000]

Application

