

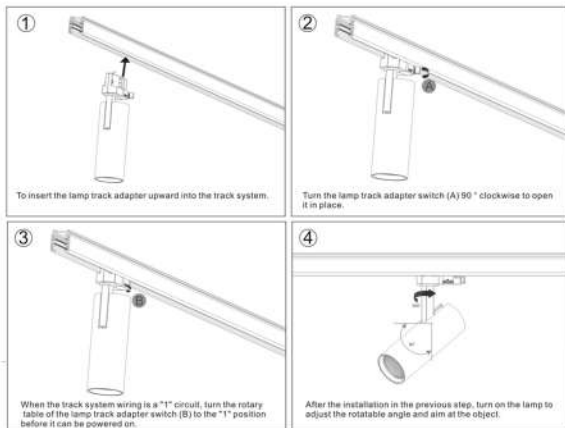
LED TRACK LIGHT
JM-4069 - Specification Sheet

Material	Aluminium
Dimensions (mm)	L85*Ø75.5*H236mm
Input voltage	220-240V
Wattage	20W
Function	ON/OFF 2
Color temperature	3000K - 4000K
LED	COB
CRI	>90
Power factor	>0.95
Driver	TUV approved/CE approved
Lifetime	30.000 h
IP Grade	IP 20
Beam angle	36°
Surface color	Sandy white / Sandy black



■ Sandy white / Sandy black

Instructions



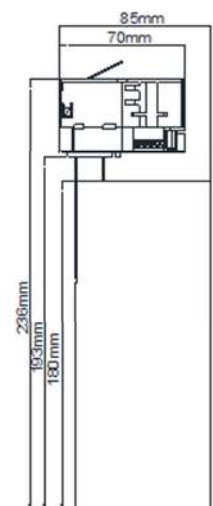
Size drawing



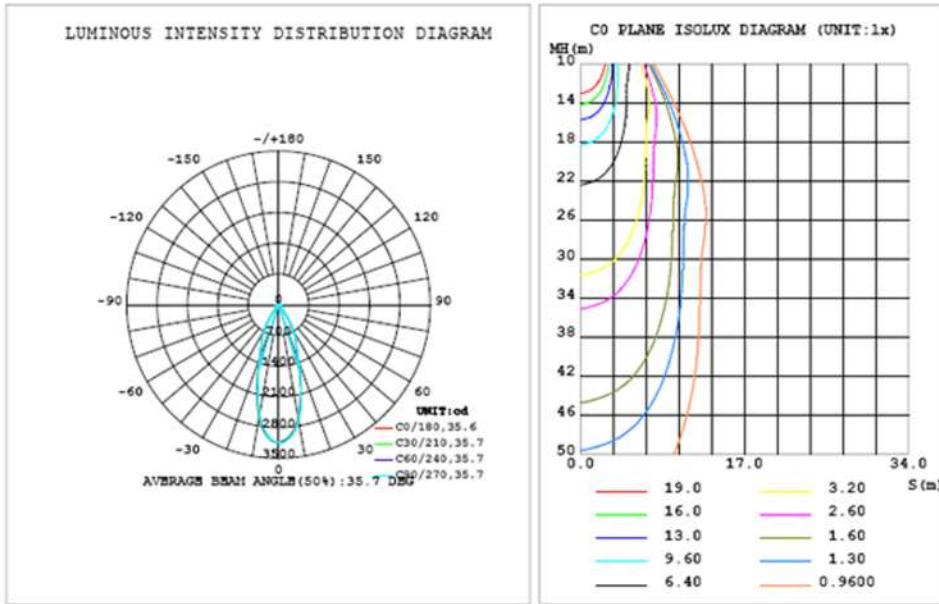
Protometric data

Test:U:221.10V I:0.0950A P:20.200W PF:0.9640 Freq:50.00Hz Lamp Flux:1769.85x1 lm		
NAME: ET-G021020WN-36-4 20W 36D	TYPE:	WEIGHT:
SPEC.:	DIM.:	SERIAL No.:
MFR.:	SUR.:	Shielding Angle:

DATA OF LAMP		PHOTOMETRIC DATA			Eff: 87.62 lm/W
MODEL		I _{max} (cd)	3169	S/MH (C0/180)	0.58
NOMINAL POWER (W)	20	LCR (%)	100.0	S/MH (C90/270)	0.57
RATED VOLTAGE (V)	220	TOTAL FLUX (lm)	1769.9	η UP, DN (C0-180)	0.0, 52.3
NOMINAL FLUX (lm)	1769.85	CIE CLASS	DIRECT	η UP, DN (C180-360)	0.0, 47.7
LAMPS INSIDE	1	η up (%)	0.1	CIBSE SHR NOM	0.50
TEST VOLTAGE (V)	221.1	η down (%)	99.9	CIBSE SHR MAX	0.65



Protometric data



C Range: 0 - 360DEG
 C Interval: 15.0DEG
 Test Speed: HIGH
 Temperature: 25.3DEG
 Operators: YU

Y Range: 0 - 100DEG
 Y Interval: 1.0DEG
 Test System: EVERFINE GO-2000B_V1 SYSTEM V2.0.402
 Humidity: 65.0%
 Test Distance: 8.000m [K=1.0000]

Application

