


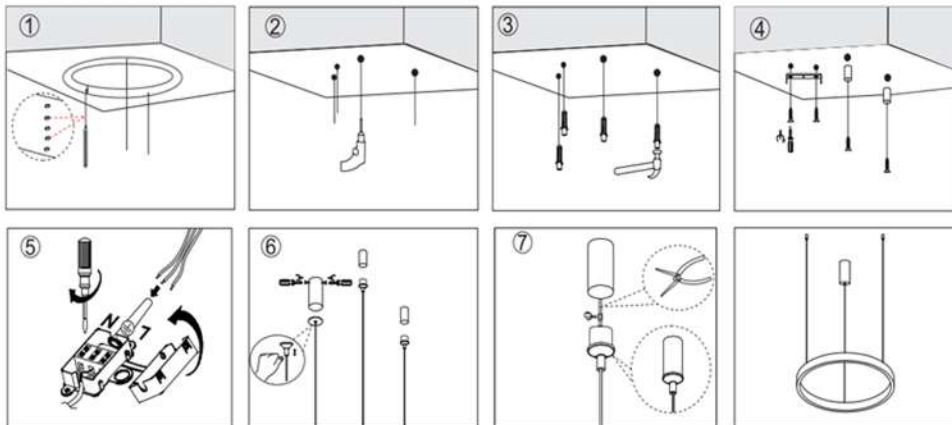
LED Pendant Lamp
Vesta 355/Vesta 356 - Specification Sheet

Material	Aluminium + Metal + Acrylic
Dimensions (mm)	Φ580*1500
Input voltage	220-240V
Wattage	48W
Function	Switch ON/OFF
Color temperature	4000K
LED	SMD 2835
CRI	>80
Power factor	>0.9
Driver	TUV approved/CE approved
Lifetime	30.000 h
IP Grade	IP 20
Beam angle	120°
Surface color	Sandy white / Sandy black / Brushed gold
Warranty	3 years

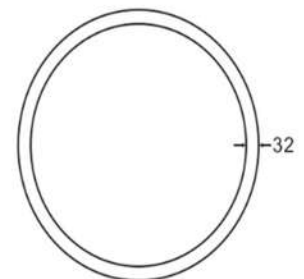
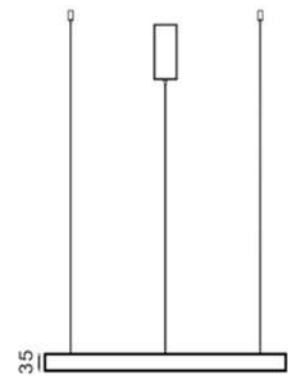


 Sandy white /
Sandy black / Brushed gold

Instructions



Size drawing

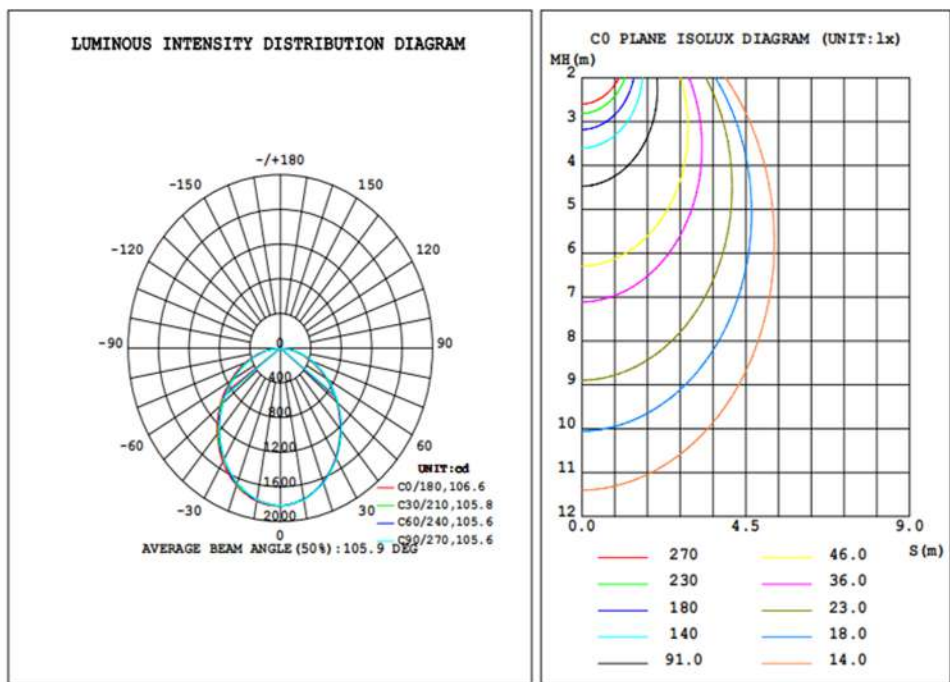


Protometric data

DATA OF LAMP		PHOTOMETRIC DATA			
MODEL	5369-860RP-4	Imax (cd)	1821	S/MH (C0/180)	1.24
NOMINAL POWER(W)	60	LOR (%)	100.0	S/MH (C90/270)	1.21
RATED VOLTAGE (V)	220	TOTAL FLUX (lm)	4834.9	η UP, DN (C0-180)	0.0, 50.0
NOMINAL FLUX (lm)	4834.9	CIE CLASS	DIRECT	η UP, DN (C180-360)	0.0, 50.0
LAMPS INSIDE	1	η up (%)	0.0	CIBSE SHR NOM	1.25
TEST VOLTAGE (V)	230	η down (%)	100.0	CIBSE SHR MAX	1.35

Eff: 56.42 lm/W

Protometric data



Application

