


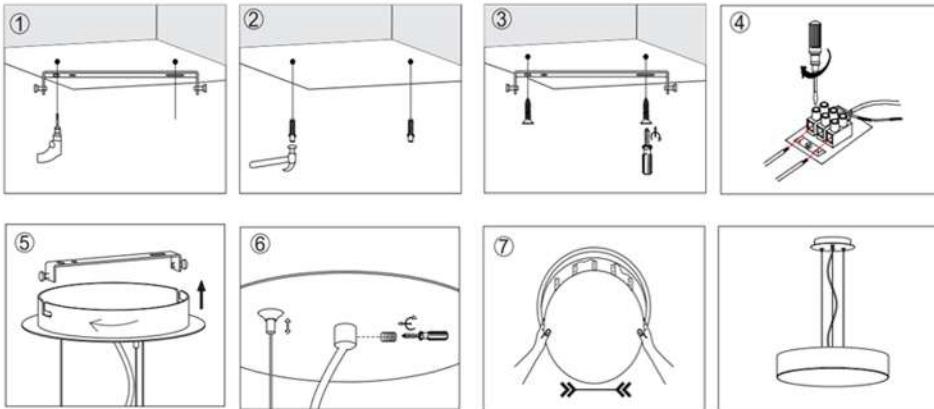
LED Pendant Lamp
Vesta 351/Vesta 352 - Specification Sheet

Material:	Metal+Acrylic
Dimensions(mm):	Φ600*1500
Input voltage:	220-240V
Wattage:	60W
Function:	ON/OFF 2 CCT+Dip switch
Color temperature:	3000K+4000K
LED:	SMD 2835
CRI:	>80
Power factor:	>0.9
Driver:	TUV approved/CE approved
Lifetime:	30000h
IP grade:	IP 20
Beam angle:	120°
Surface color:	Sandy white/Sandy black
Warranty:	3 years

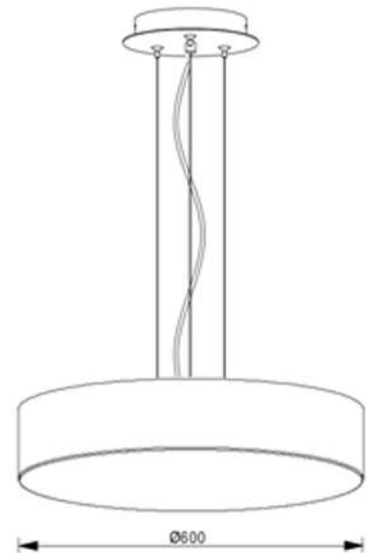


 Sandy white / Sandy black

Instructions



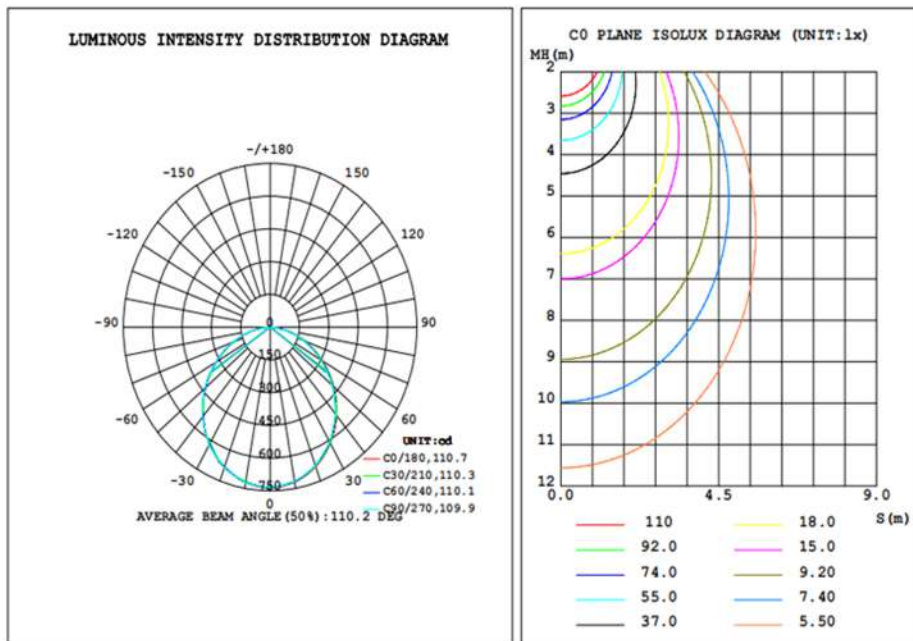
Size drawing



Photometric data

DATA OF LAMP		PHOTOMETRIC DATA			
		Eff: 66.79 lm/W			
MODEL	3921-830RC-BK-3+4	I _{max} (cd)	735.3	S/MH (C0/180)	1.25
NOMINAL POWER (W)	30	LOR (%)	100.0	S/MH (C90/270)	1.26
RATED VOLTAGE (V)	220	TOTAL FLUX (lm)	2042.6	η UP, DN (C0-180)	0.0,49.1
NOMINAL FLUX (lm)	2042.63	CIE CLASS	DIRECT	η UP, DN (C180-360)	0.0,50.9
LAMPS INSIDE	1	η up (%)	0.0	CIBSE SHR NOM	1.25
TEST VOLTAGE (V)	230	η down (%)	100.0	CIBSE SHR MAX	1.35

Protometric data



Application

