



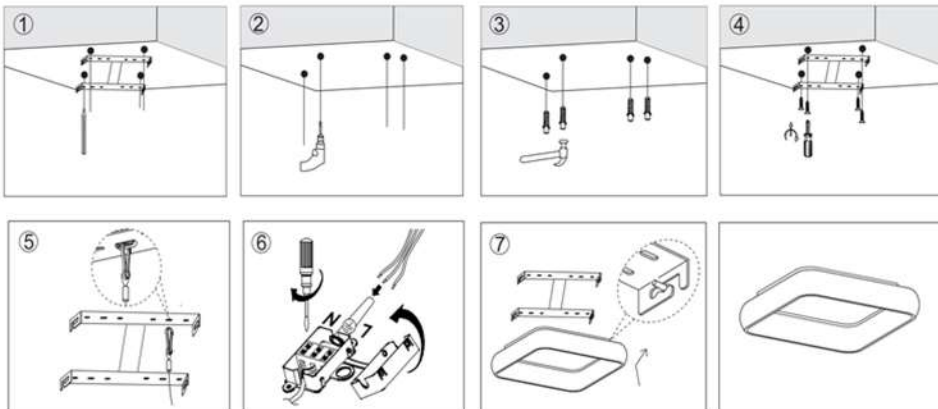
**LED Ceiling Lamp**  
**Vesta 345/Vesta 346 - Specification Sheet**

Material:	Metal+Acrylic
Dimensions(mm):	475*475*85
Input voltage:	220-240V
Wattage:	38W
Function:	ON/OFF 2 CCT+Dip switch
Color temperature:	3000K+4000K
LED:	SMD 2835
CRI:	>80
Power factor:	>0.9
Driver:	TUV approved/CE approved
Lifetime:	30000h
IP grade:	IP 20
Beam angle:	120°
Surface color:	Sandy white/Sandy black
Warranty:	3 years



  Sandy white / Sandy black

**Instructions**



**Protometric data**

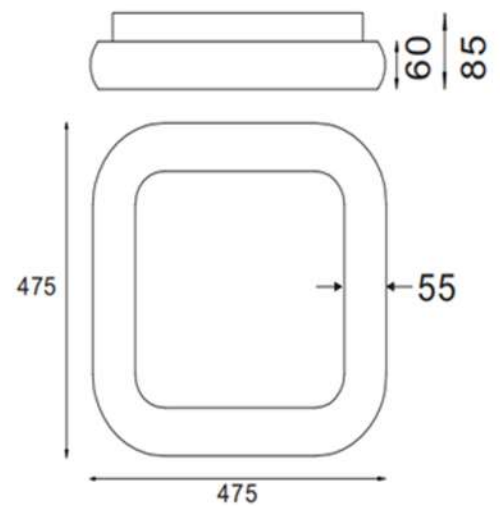
**Luminaire Property**

Luminaire Manufacturer:	
Luminaire Description: 5280-838SQ	Voltage: 220 V
Current: 0.175 A	Power: 37.09W
Power Factor: 0.962	

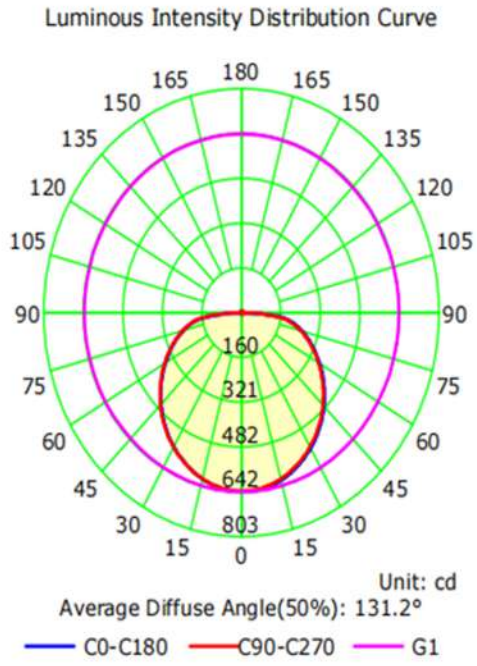
**Photometric Results**

CIE Class: Direct	Total Rated Lamp Lumens: 2287.2 lm
Measurement Flux: 2287.2 lm	Efficiency: 100%
Downward Ratio: 99%	Upward Ratio: 1%
Horizontal Diffuse Angle(50%): H131.1	
Vertical Diffuse Angle(50%): V131.4	
Luminaire Efficacy Rating (LER): 61.71	Central Intensity: 642.84 cd
Max. Intensity: 642.97 cd	Pos of Max. Intensity: H0 V1
S/MH(C0/C180): 1.29	S/MH(C90/C270): 1.29

**Size drawing**



Protometric data



Application

